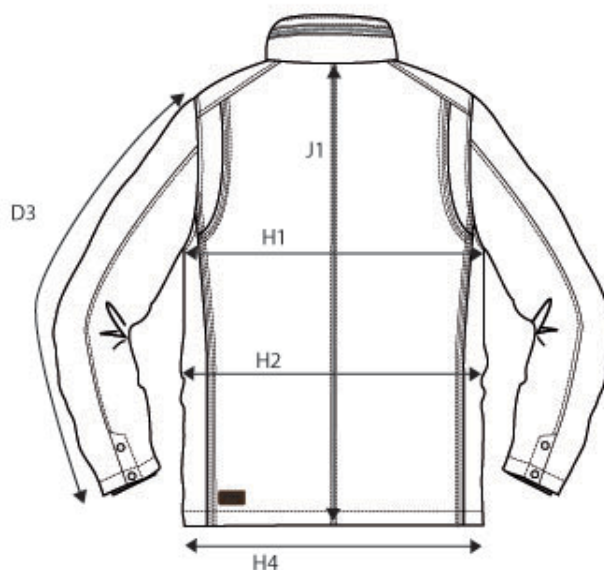
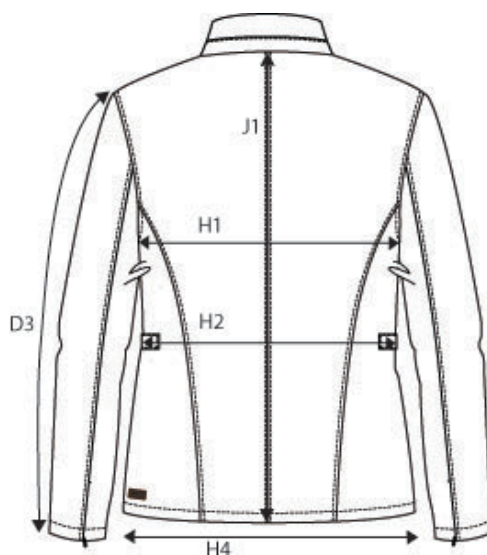


## SIZE AND FIT: MORRISTOWN



### MORRISTOWN Mens

Base size: M / Measurement (in cm)	Diagram	S	M	L	XL	XXL	3XL	4XL
SLEEVE LENGTH - from shoulderseam	D3	67,25	<b>69</b>	70,75	72,5	74,25	76	77,75
1/2 CHEST WIDTH at armhole	H1	53	<b>56</b>	59	62	65	68	71
1/2 WAIST	H2	49	<b>52</b>	55	58	61	64	67
1/2 BOTTOM WIDTH	H4	53	<b>56</b>	59	62	65	68	71
FULL LENGTH at centre back	J1	72	<b>75</b>	78	81	84	87	90



### MORRISTOWN Ladies

Base size: M / Measurement (in cm)	Diagram	XS	S	M	L	XL	XXL
SLEEVE LENGTH - from shoulderseam	D3	65	66	<b>67</b>	68	69	70
1/2 CHEST WIDTH at armhole	H1	46	49	<b>52</b>	55	58	61
1/2 WAIST	H2	40	43	<b>46</b>	49	52	55
1/2 BOTTOM WIDTH	H4	48	51	<b>54</b>	57	60	63
FULL LENGTH at centre back	J1	63	65	<b>67</b>	69	71	73